



# TYGER®

## FENDER FLARE

TG-FF8F4378



### ATTENTION!

PLEASE READ THE INSTRUCTIONS CAREFULLY BEFORE STARTING INSTALLATION. PLEASE FOLLOW THE APPROVED INSTALLATION ACCORDING TO THE WRITTEN INSTRUCTIONS. FAILURE TO DO SO MAY CAUSE DAMAGE TO YOUR VEHICLE AND INVALIDATE THE WARRANTY.



### WARNING!

DIRT OR DEBRIS MAY BECOME LODGED BETWEEN FLARES AND VEHICLE'S FENDERS CAUSING SCRATCHING AND PAINT WEAR FROM VEHICLE VIBRATION. TYGER™ IS NOT RESPONSIBLE FOR ANY DAMAGE, AND INSTALLATION IS DONE WITH BUYER'S UNDERSTANDING THAT THIS DAMAGE MAY POTENTIALLY OCCUR.

#### PRIOR TO INSTALLATION:



CHECK EVERYTHING BEFORE INSTALLATION



USE NON-ABRASIVE SURFACE TO INSTALL



VERIFY FITMENT OF FLARES TO VEHICLE



REMOVE DECALS & MUD FLAPS FIRST



ABRASIVE DETERGENT IS PROHIBITED

#### SAFETY INFORMATION:



NO AUTOMATIC BRUSH-STYLE WASH



CHECK TIGHTNESS



CHECK CAREFULLY BEFORE DRIVE

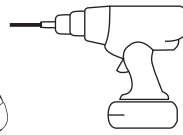
**ABOUT PAINTING:** Painted flares cannot be returned. Test fit before painting. We are not responsible for any costs that may incur if flares were painted without test fitting.

- Clean surface to be painted with a good grade degreaser. Do not use lacquer thinner or any solvent based product.
- Wipe flare surface completely dry with a tack rag prior to paint.
- Application of plastic adhesion promoter for PP plastic as per your paint system manufacturer's recommendations is required.
- Use a high quality enamel or polyurethane automotive paint to paint the flares.
- Not recommend to paint the edge trim, but if desired use a flex additive.

#### TOOLS FOR EASIER INSTALLATION



Utility Knife



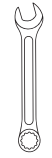
Electric Drill



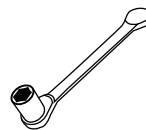
1/4" Drill Bit



#2 Phillips Driver



1/2" Wrench



Socket Wrench



7/32" Socket



10mm Socket



Grease Pencil



Work Gloves

#### HARDWARE KIT INCLUDED



[A] Edge Trim



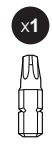
[B] Torx Bolt



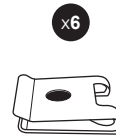
[C] SS Washer



[D] Nylock Nut



[E] T45 Torx Bit



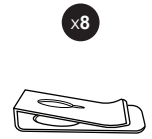
[F] U-Clip



[G] PH Truss Screw



[H] Mylar Tab



[I] Long U-Clip



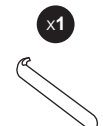
[J] S-Clip



[K] PH Metal Screw



[L] Nylon Retainer



[M] Edge Trim Tool



x2 Inner Bracket



x2 Front Flare



x2 Rear Flare

#### NOTE:

Driver's side Inner Bracket is marked with "LR", passenger's side Inner Bracket is marked with "RR".

DAMAGED or MISSING parts?

[www.TygerAuto.com/Contact](http://www.TygerAuto.com/Contact)





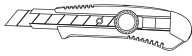
## EDGE TRIM INSTALLATION

- Peel 2 to 3" of red vinyl backing away from one end of the **Edge Trim [A]** .
- Apply **Edge Trim [A]** over top edge of flare with adhesive side contacting inside edge of flare.
- Press **Edge Trim [A]** into place and apply thumb pressure to ensure good adhesion, pull away red backing as you work your way around flare edge in one-foot increments.

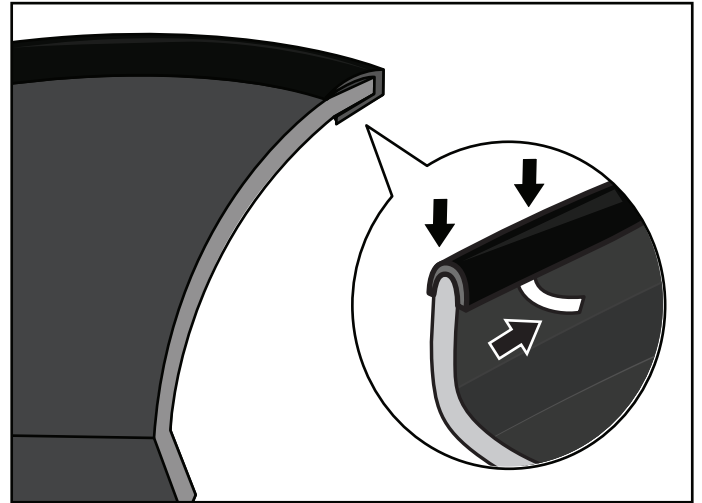
### You will need:



Edge Trim [A]



Utility Knife



### NOTE!

**DO NOT** stretch Edge Trim during application.

## DECORATIVE RIVET INSTALLATION

- Put a **Torx Bolt [B]** with a **Washer [C]** through each of the top holes around the flare and using a **Nylock Nut [D]** to secure on the other side. Using a socket wrench and the supplied **Torx Bit [E]** on an electric drill to tighten bolts. **DO NOT** over-tighten as this may damage the flare.

### You will need:



[B]  
Torx Bolt



[C]  
SS Washer



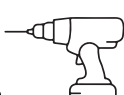
[D]  
Nylock Nut



[E]  
T45 Torx Bit



1/2"  
Wrench



Electric Drill

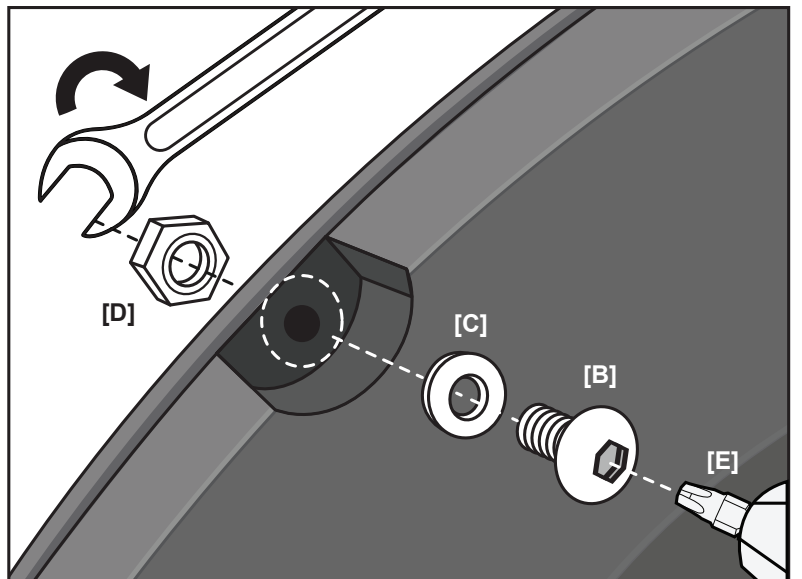
### NOTE!

- **DO NOT** drill holes on the vehicle body as rivets are decorative and fasten only to the flare. Do not attempt to use the bolts to fasten flare to vehicle body.

- All exposed fasteners and bare metal should be treated with rust resistant paint before installing flares, Spray inner fender wells with undercoating after flare installation

- For vehicle with large tires may require lowering bump stops and/or installing steering stops to prevent tire from contacting flares

- Modification may be necessary to maintain a minimum 4" clearance between flares and exhaust pipes. (Exhaust gases should not vent directly onto flares)





## FRONT FLARES INSTALLATION



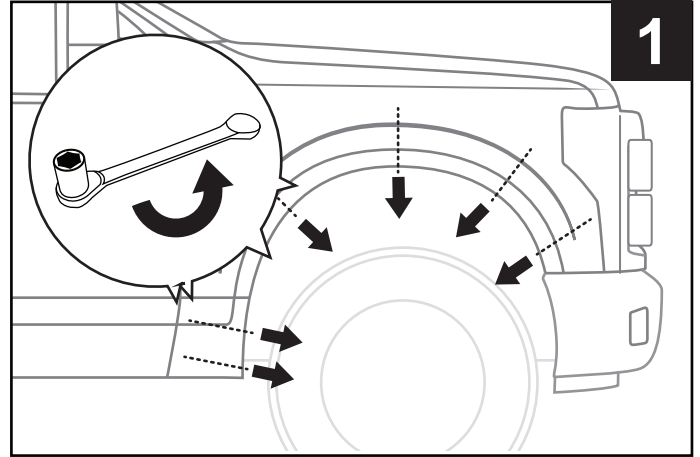
### NOTE!

PLEASE USE APPROPRIATE TOOLS TO CLEAN THE VEHICLE IF IT IS NECESSARY, DRY IT OUT BEFORE YOU START THE INSTALLATION.

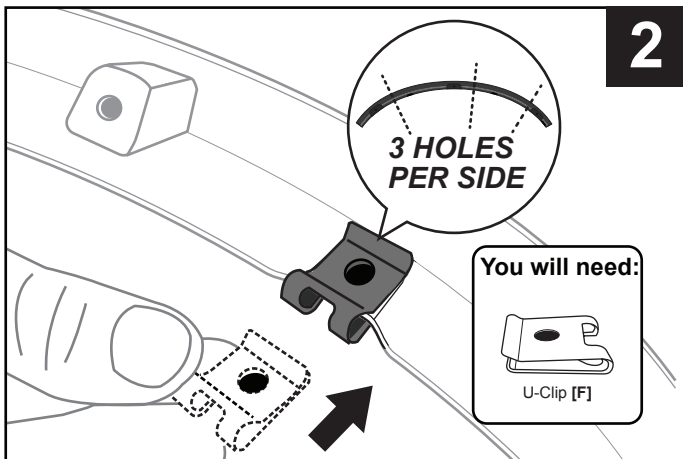


### ATTENTION!

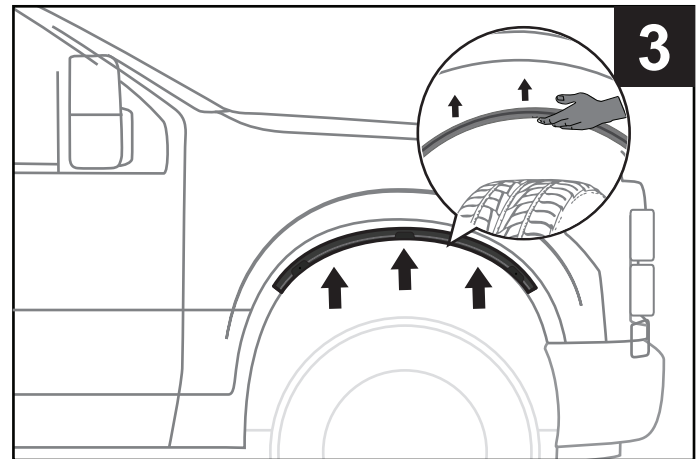
SOME COMPONENTS MIGHT BE SHARP, FOR SAFETY CONCERNS, PLEASE WEAR GLOVES DURING THE INSTALLATION FOR PROTECTION IF IT IS NEEDED.



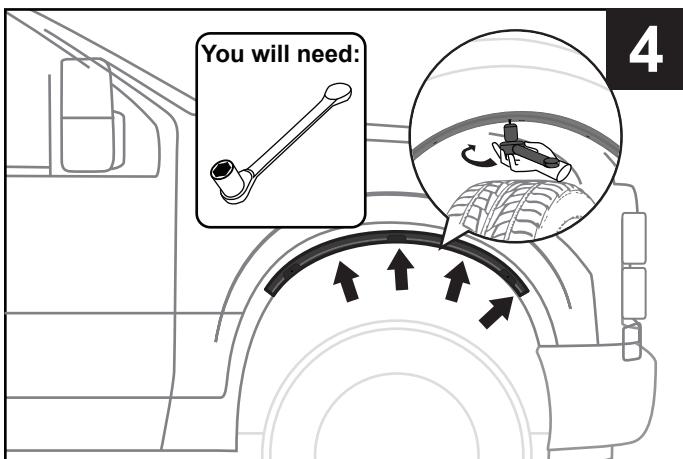
1. With a 7mm socket wrench, remove 6 factory screws and save for later use.



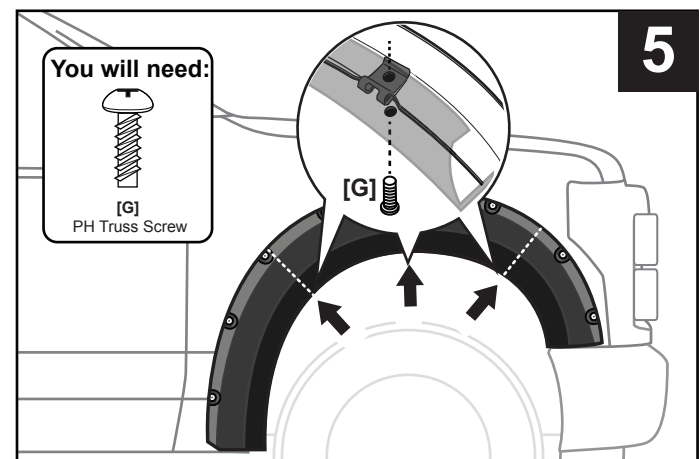
2. Slide 3 supplied U-Clips [F] to each inner bracket as shown.



3. Line up the holes in the inner bracket with the 3 uppermost factory holes.



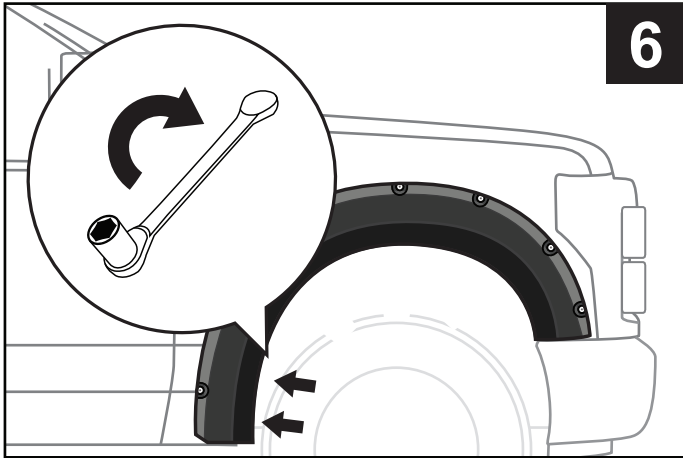
4. With a 7mm socket wrench, reinstall 4 factory screws to secure inner bracket to the fender wheel.



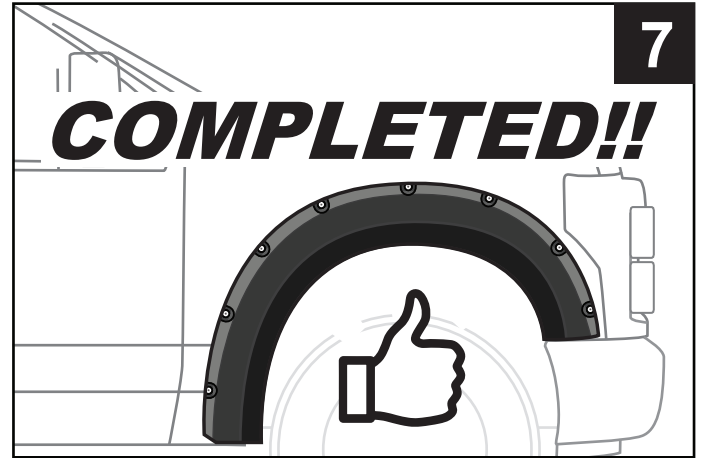
5. Hold flare to fender and press firmly in position by aligning the top 3 holes in flare with 3 U-Clip holes on inner bracket. Then, install 3 PH Screws [G] through holes in flare and into U-Clips on the inner bracket. **DO NOT** tighten.



# TYGER<sup>®</sup>

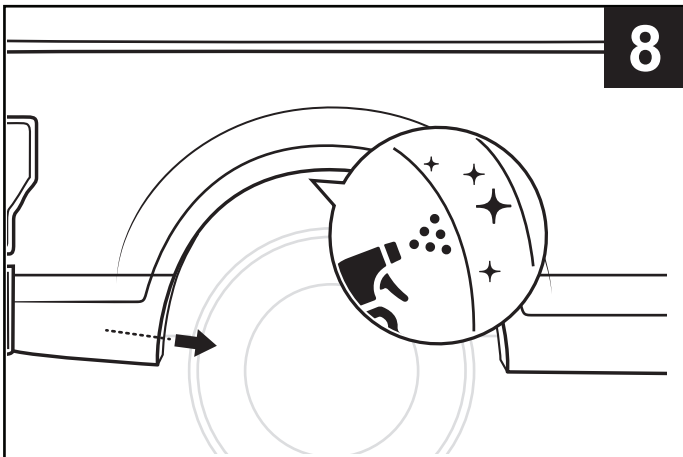


6. With a 7mm socket wrench, reinstall the remaining 2 factory screws.

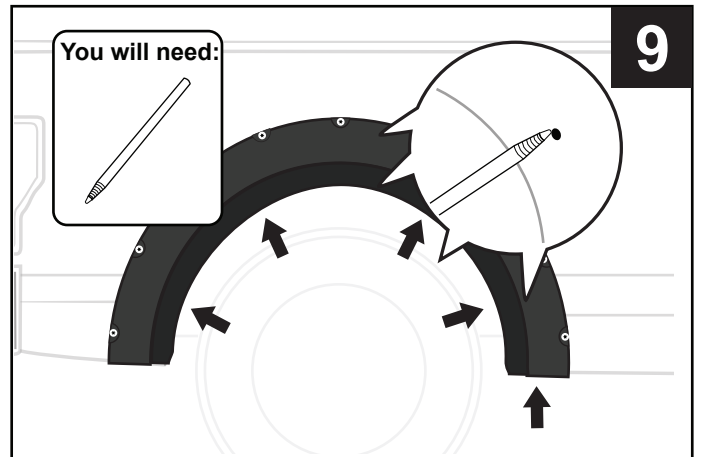


7. Tighten all screws. Repeat the same procedure on the other side.

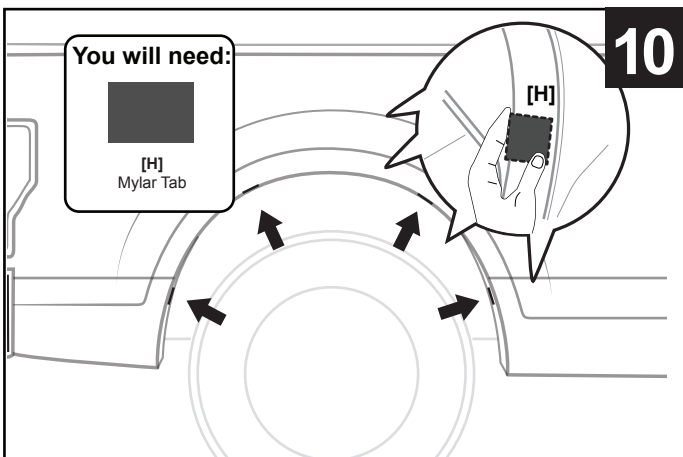
## REAR FLARES INSTALLATION



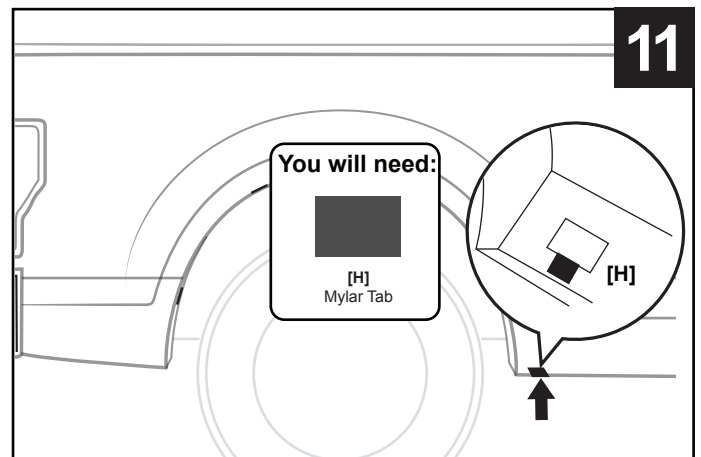
8. Remove factory fastener. Clean the fender wheel if needed.



9. Hold flare in position. With a grease pencil, mark 5 points using holes in flare as guide.



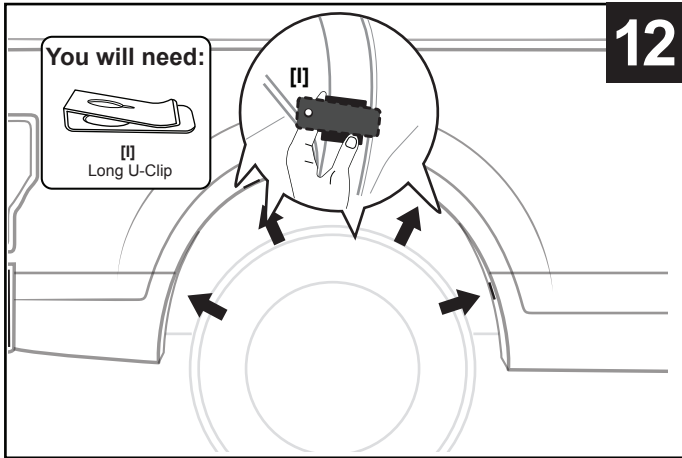
10. Wrap 4 supplied Mylar Tabs [H] around the sheet metal by centering over each mark made in STEP 9.



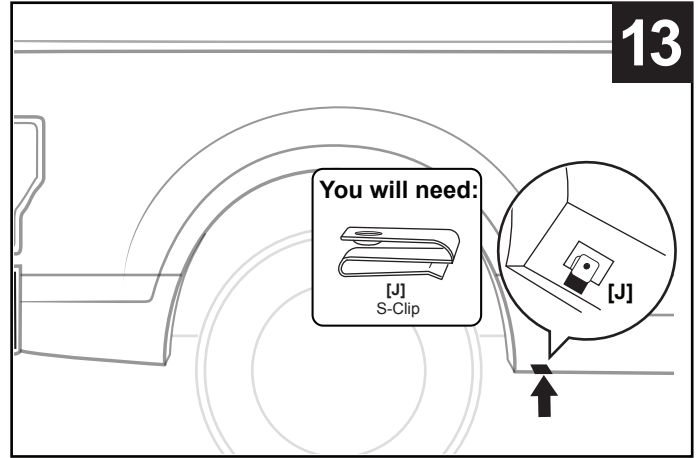
11. Stick another supplied Mylar Tab [H] over the lower front mark.



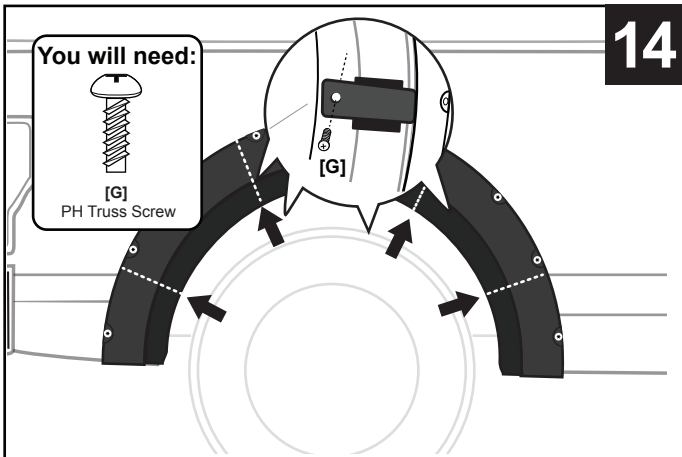
# TYGER®



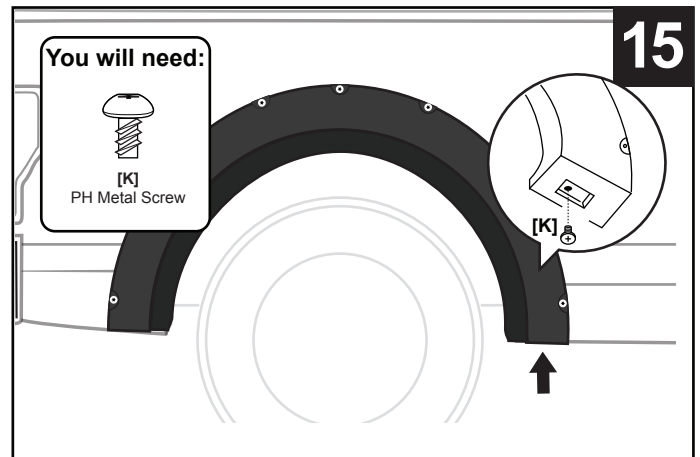
12. Install 4 supplied Long U-Clip [I] over each of the 4 Mylar Tabs installed in **STEP 10**.



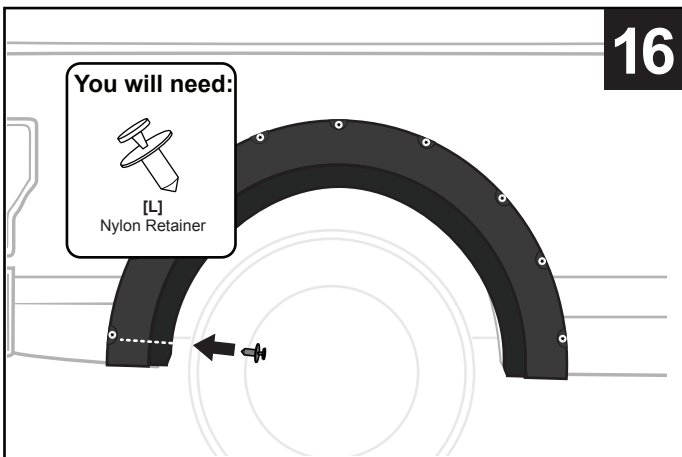
13. Install a supplied S-Clip [J] over the Mylar Tab installed in **STEP 11**.



14. Hold flare in position, install 4 supplied PH Truss Screws [G] through top 4 holes in flare and into Long U-Clips.



15. Install a supplied PH Metal Screw [K] through the lower front hole in flare and into the S-Clip.



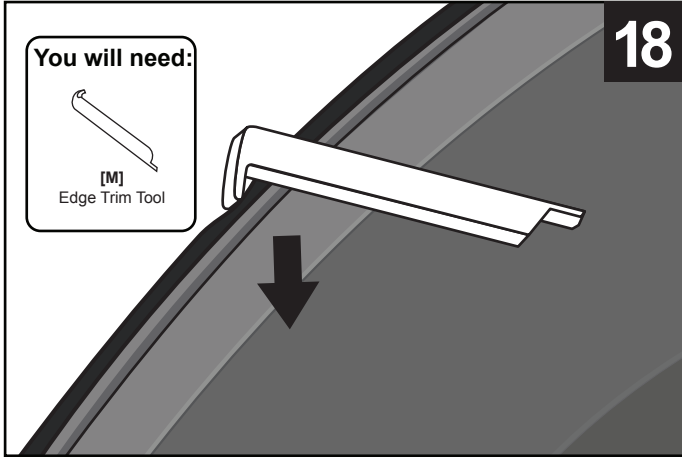
16. Install a supplied Nylon Retainer [L] through hole in flare and into factory hole at rear of wheel well.



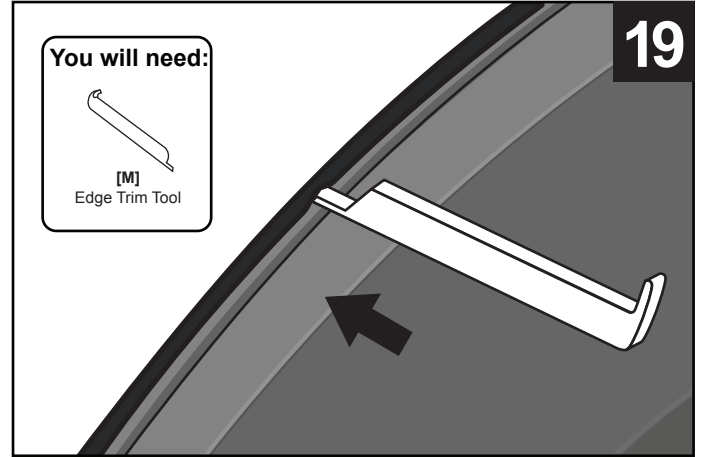
17. Tighten all screws. Repeat the same procedure on the other side.



## EDGE TRIM TOOL USAGE (OPTIONAL):

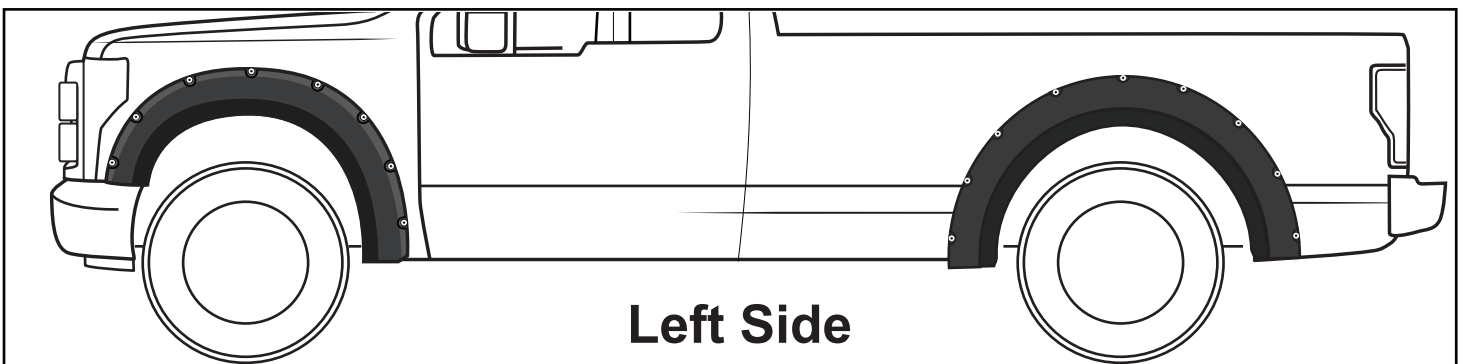
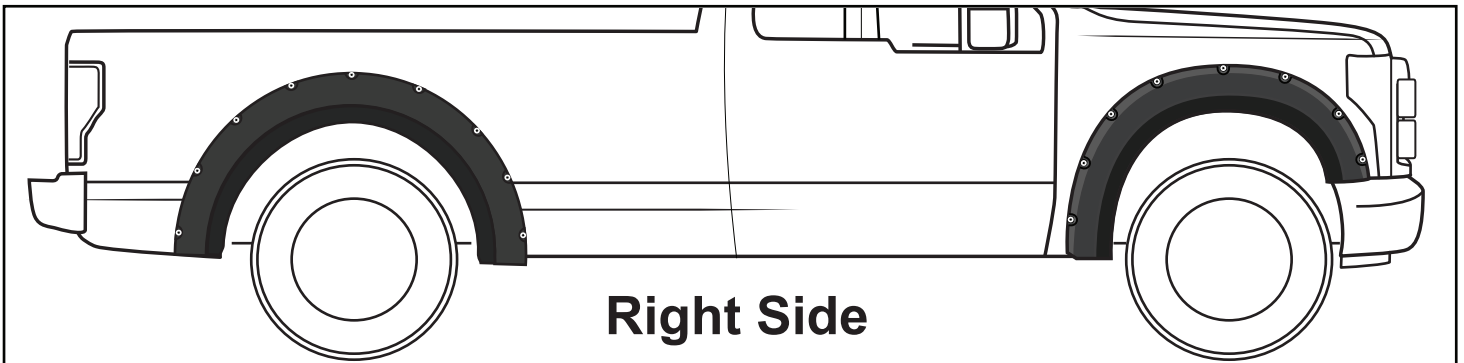


18. If needed, use supplied Edge Trim Tool [M] to trim outer edge by inserting the curved end, then sliding around the entire trim from one end to the other.



19. If needed, use supplied Edge Trim Tool [M] to trim inner edge by inserting the straight end, then sliding around the entire trim from one end to the other.

## FINAL COMPLETED EFFECTS

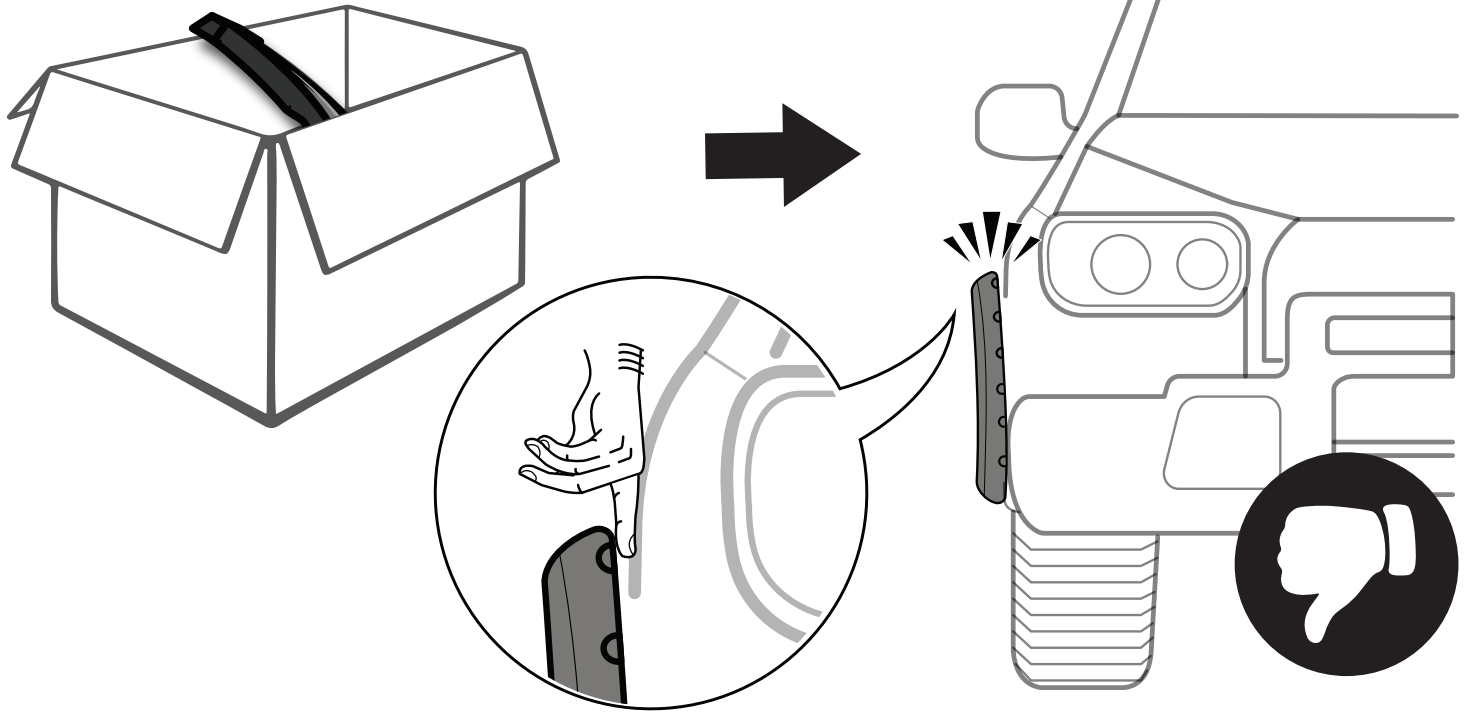


**NOTE:**  
Above images are for reference ONLY, final result may vary.

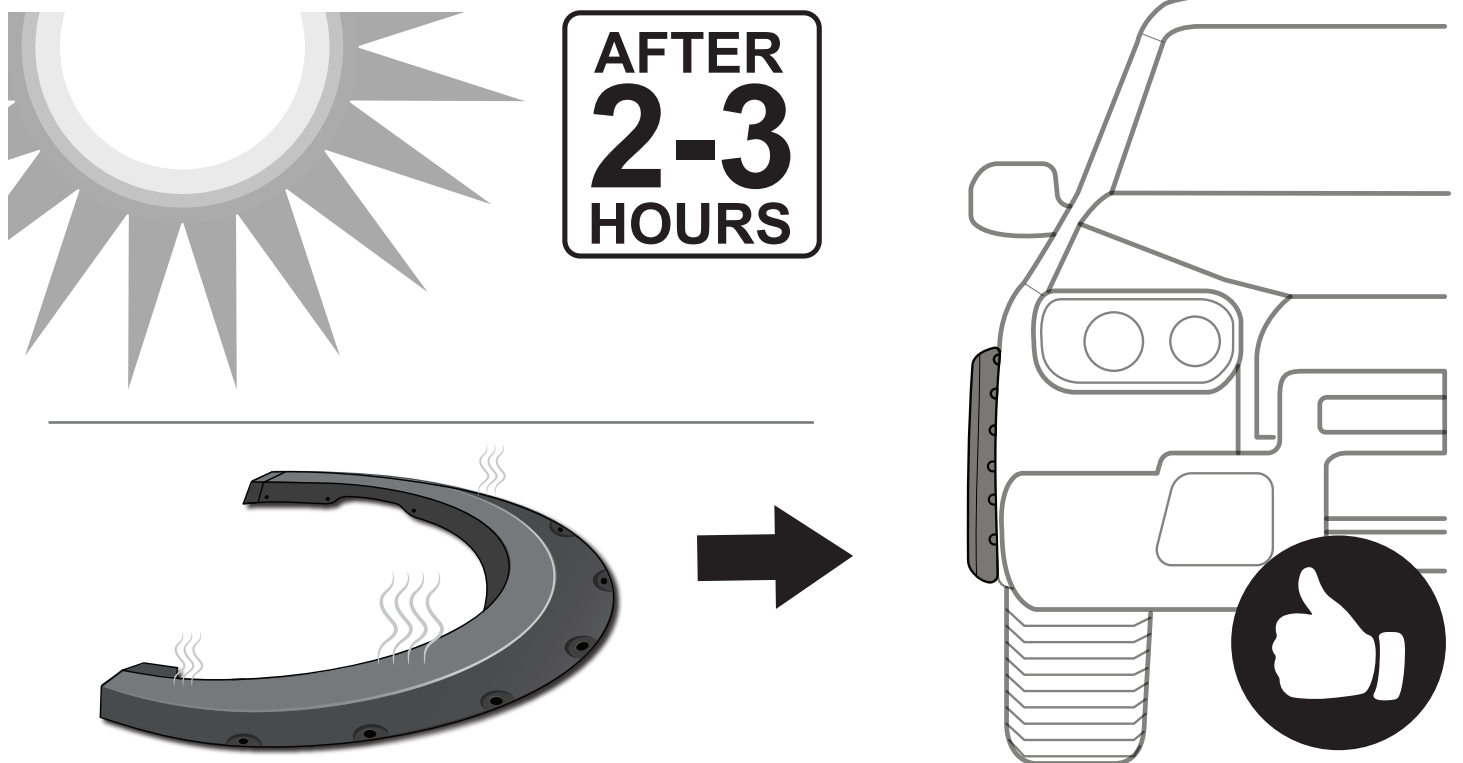


# TYGER<sup>®</sup>

## FITMENT OR GAP ISSUE?



## SOLUTION!



\*In winter, heat gun or hair dryer may be used instead.