



DH2101

2003-12 Ram 2500/3500

2013 Ram 2500 (Includes Mega Cab)

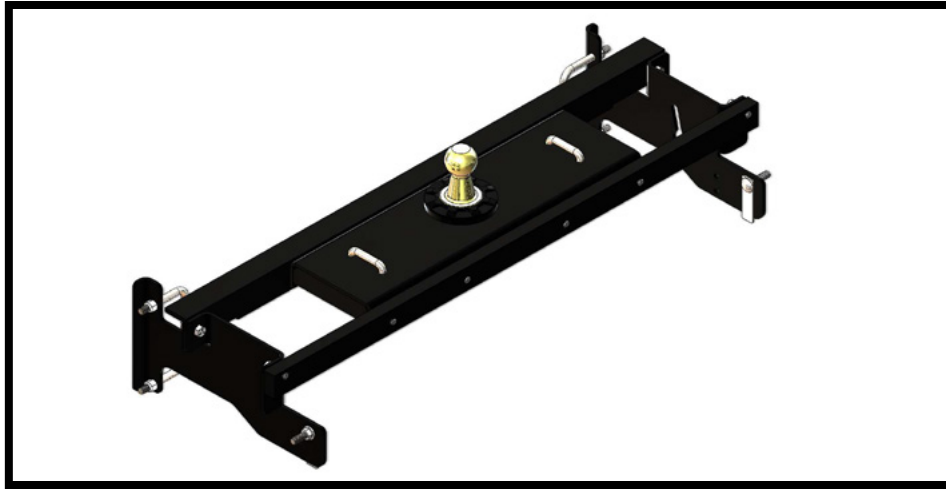
2006-12 Ram 1500/2500/3500 Mega Cab

Long & Standard Boxes (No Chassis Cab)

Installation Instructions

Serial Number

Please read these Installation Instructions in their entirety prior to installing or operating this equipment.



This hitch is rated to 30,000 lbs. Gross Towing Weight and 7,500 lbs. Tongue Weight

Bolt Torque Specifications

Torque in Foot-Pounds for Inch Bolts

Bolt Size	Grade 5	Grade 8
1/4"	10	14
5/16"	19	29
3/8"	33	47
7/16"	54	78
1/2"	78	119
5/8"	154	230
3/4"	257	380

Bolt Torque Specifications

Torque in Foot-Pounds for Metric Bolts

Bolt Size	Grade 8.8	Grade 10.9
6MM	6	8
8MM	16	22
10MM	31	40
12MM	54	70
14MM	89	117
16MM	161	230
18MM	222	318



WARNING

Refer to your vehicle's owner's manual for maximum towing capacity. **DO NOT** exceed vehicle, tongue or hitch weight ratings - failure to follow vehicle manufacturer's recommendations could result in damage to your vehicle, personal injury or death.



WARNING

Failure to read and follow these instructions could result in separation of the trailer from the truck, causing property damage, loss of towed vehicle, personal injury or death.

DH2101

2003-12 Ram 2500/3500, 2013 Ram 2500 (Includes Mega Cab)
2006-12 Ram 1500/2500/3500 Mega Cab Long & Standard Boxes (No Chassis Cab)
Installation Instructions



- Trailer brakes are required.
- Always insure there is sufficient clearance between the hitch ball in the stored position and the vehicle's rear differential. A DH9004 plug is available for use when the ball is not stored in the ball housing.
- Do not use any open flame under the truck bed to cut or weld. There is extreme danger of explosion or fire.
- Vehicle must be securely blocked and brakes set before beginning to work underneath the vehicle.
- Do not clamp hitch over any wiring or brake lines.
- Always make sure trailer is loaded slightly tongue heavy. Do not pull a trailer that is lighter on the tongue end.

Maintenance/Care

- Periodically clean any dirt/debris from the ball and ball housing and moderately lubricate them with white lithium grease or equivalent grease.

Instruction Notes: The exhaust hangers and wheel well covers are removed and reinstalled for the hitch installation. Some drilling and trimming is required.

Place all components that are removed on a flat, sturdy surface. All items will be reinstalled unless otherwise noted after the hitch is installed.

The dimensional variations between otherwise identical vehicles can be considerable. While this hitch was designed for easy installation, it may be necessary to modify the hitch slightly to compensate for vehicle manufacturer's tolerances.

NOTICE

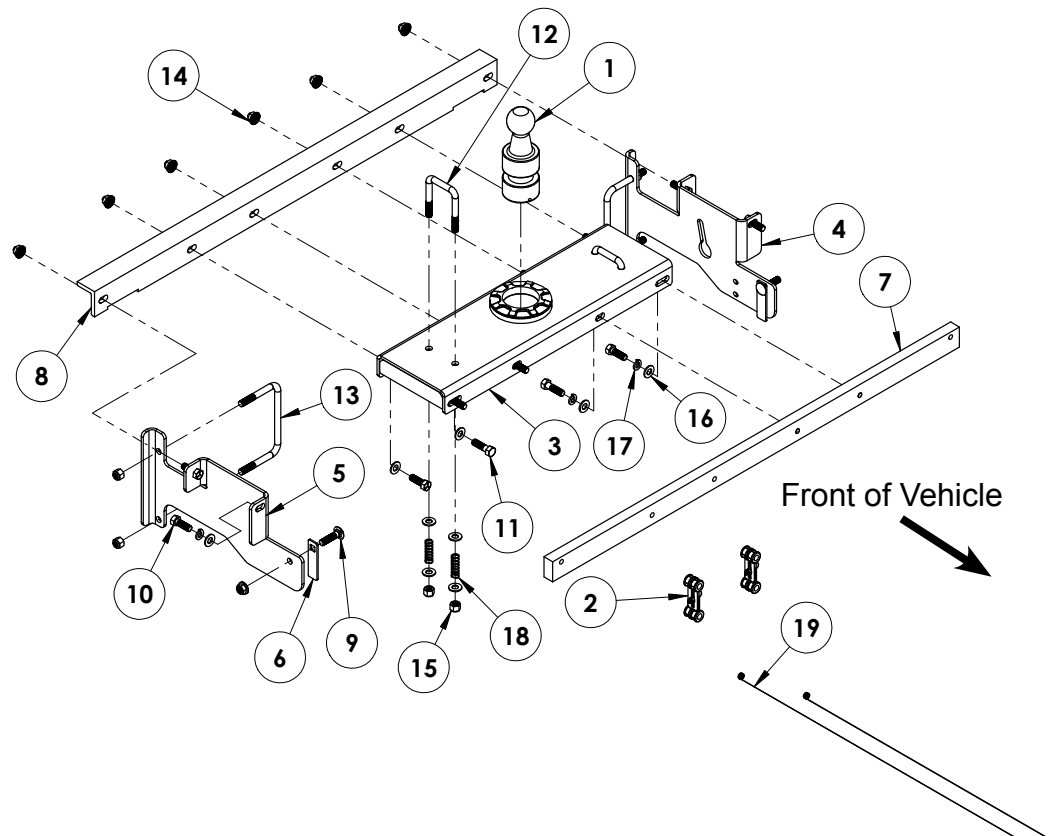
- When a bed liner is installed, compensation of the bed liner thickness must be accounted for when measuring the ball location in the box bed.
- When using power drills be aware of the dangers of torque and drill bit length.
- When using a reciprocating saw be aware of objects behind the cutting surface.
- Use a good quality paint to spray cut edges of frame to prevent rusting.
- Be sure to use Loctite® Red on all bolts before tightening. Tighten all bolts according to the torque chart provided.
- The installer must instruct the operator on proper ball installation and locking procedures.
- Dealer or installer be certain the user receives these instruction sheets.
- If the hitch is in an accident, it must be replaced. **DO NOT** use it again! An accident can cause unseen damage and using it again could result in more damage or serious injury. **DO NOT** use the hitch if it is damaged or missing parts.

DH2101

2003-12 Ram 2500/3500, 2013 Ram 2500 (Includes Mega Cab)
 2006-12 Ram 1500/2500/3500 Mega Cab Long & Standard Boxes (No Chassis Cab)
 Installation Instructions

Tools Required

Torque Wrench
 Drill
 Phillips Screwdriver
 Hammer
 Tape Measure
 Loctite® RED
 5" Hole Saw
 1/4" Drill Bit
 1/2" Drill Bit
 3/4" Socket
 3/4" Wrench
 11/16" Socket
 10MM Socket
 16MM Wrench



Item No.	Part No.	Description	Qty.
1.....	62-3822.....	Hitch Ball.....	1
2.....	62-3852.....	Exhaust Hanger.....	2
3.....	62-3994.....	DH2101 Center Section.....	1
4.....	101-8429.....	DS Support Plate.....	1
5.....	101-8430.....	PS Support Plate.....	1
6.....	101-8431.....	Locking Plate.....	2
7.....	102-7503.....	DH2101 Front Cross Member.....	1
8.....	105-1577.....	DH2101 Rear Cross Member.....	1
9.....	201-0025.....	1/2"-13 x 2" Carriage Bolt, Grade 5, ZP.....	2
10.....	201-0051.....	1/2"-13 x 1-1/2" Hex Head Bolt, Grade 5, ZP.....	8
11.....	201-0068.....	1/2"-13 x 1-3/4" Hex Head Bolt, Grade 5, ZP.....	4
12.....	201-0275.....	1/2"-13 x 3-3/4" x 2-1/2" U-Bolt, ZP.....	2
13.....	201-0970.....	1/2"-13 x 6-1/4" x 4" U-Bolt, ZP.....	2
14.....	202-0072.....	1/2"-13 Hex Flange Whiz Lock Nut, ZP.....	8
15.....	202-0094.....	1/2"-13 Hex Nylon Lock Nut, ZP.....	8
16.....	203-0005.....	1/2" Flat Washer, ZP.....	18
17.....	203-0012.....	1/2" Lock Washer, ZP.....	6
18.....	222-0091.....	Compression Spring (.049" Dia x .60" x 2").....	4
19.....	229-0955.....	1/2" Bolt Leader x 48"L.....	2
20.....	DH9004(not shown).....	Ball Housing Plug.....	1

Important:

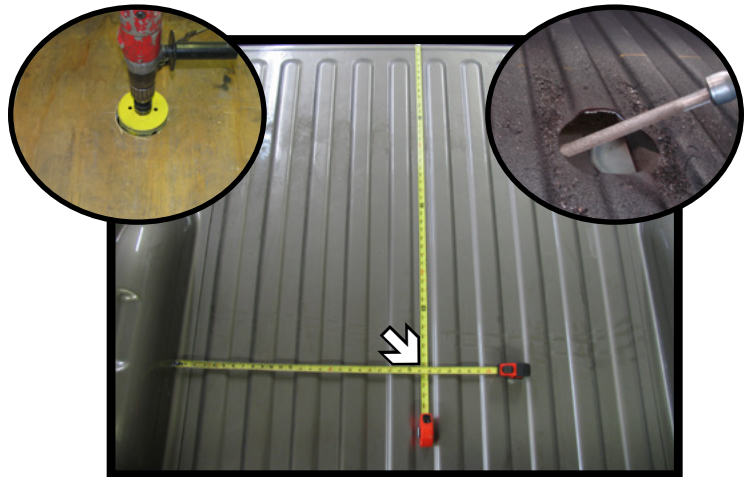
Use only genuine factory replacement parts on your Diamond Hitch. Do **NOT** substitute homemade or non-typical parts. If a bolt is lost or in need of replacement, for your safety and the preservation of your hitch, be sure to use a replacement bolt of the same grade (In most cases it will be Grade 5, please reference the parts list above). Replacement parts may be ordered through your nearest Blue Ox® Dealer or Distributor. Failing to follow and/or altering these installation instructions in either installation or required equipment will void the manufacturer's warranty.

DH2101

2003-12 Ram 2500/3500, 2013 Ram 2500 (Includes Mega Cab) 2006-12 Ram 1500/2500/3500 Mega Cab Long & Standard Boxes (No Chassis Cab) Installation Instructions

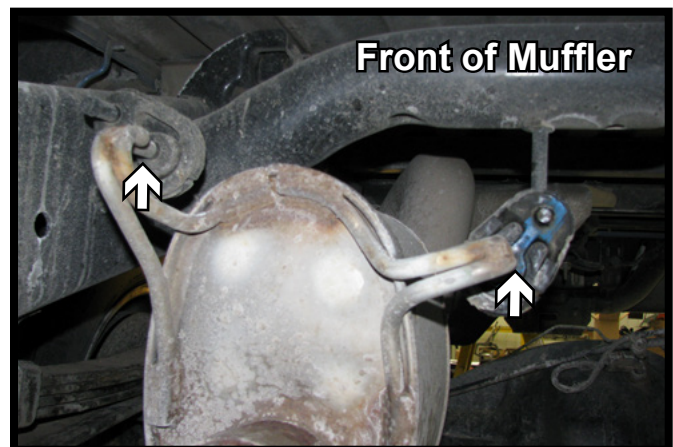
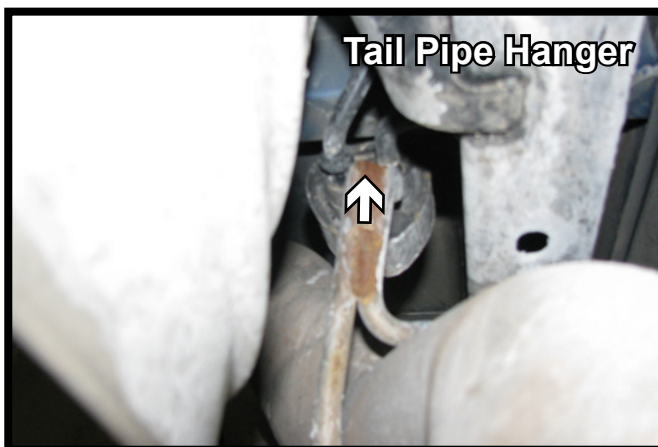


1. Using the vehicles jack handle tool, remove the spare tire as per vehicles owners manual.



2. On the inside of the bed, measure from the rear (not the tailgate) forward 46-3/16" for a 8' bed or 44-3/16" for a 6'-4" bed and mark. Measure between the wheel wells and mark center. Using a 5" hole saw, drill a hole thru the bed.

Note: Using a board while drilling decreases chances of the bit wobbling out of position (left inset). It is also recommended to debur the hole so the hitch will sit tight against the bed (right inset).

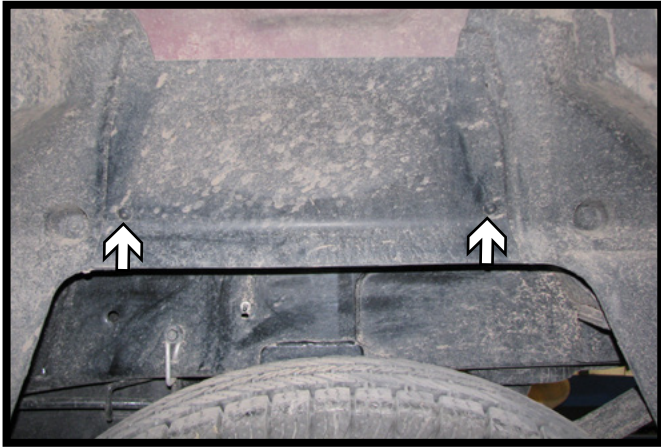


3. Drop the exhaust by sliding the three (3) hangers out of the rubber insulators. There is one (1) near the tail pipe and two (2) on the front side of the muffler.

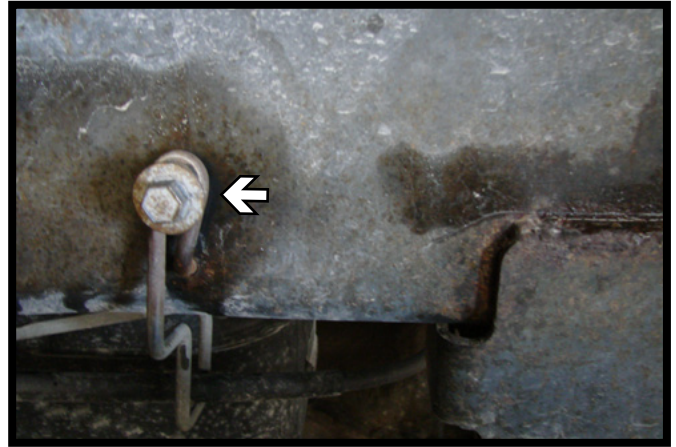
Note: Using silicone spray on the hangers eases removal from rubber insulators.

DH2101

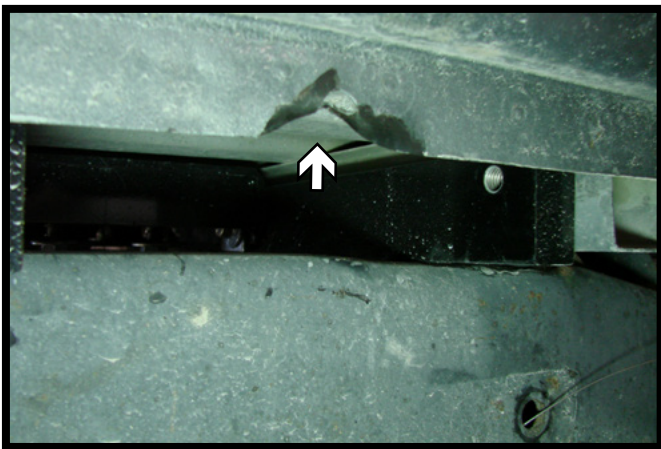
2003-12 Ram 2500/3500, 2013 Ram 2500 (Includes Mega Cab) 2006-12 Ram 1500/2500/3500 Mega Cab Long & Standard Boxes (No Chassis Cab) Installation Instructions



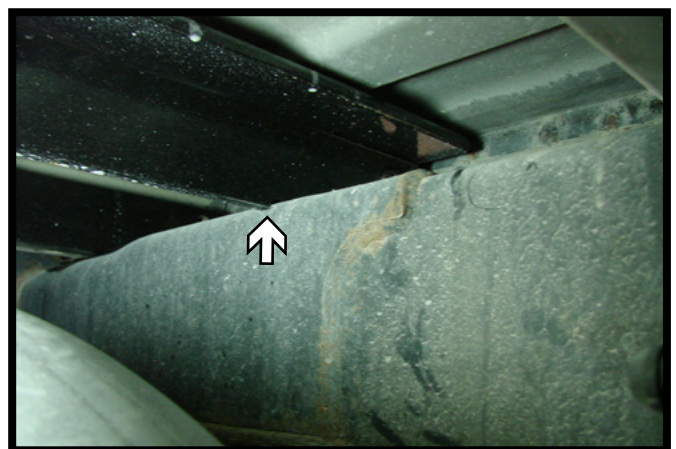
4. Using a Phillips screwdriver, remove the two (2) screws on the wheel well cover just above the rear tires. Do this to both sides of the vehicle. Set the covers aside to be reinstalled later.



5. On the driver side only, remove the emergency brake bracket bolt and set aside.



6. On passenger side, locate the hole in the bottom rib of the truck box just above the frame. Insert the rear angle cross-member through the opening between the top of the frame and the box directly above the hole and lift to create a crease in the rib to allow room to install the cross-member across the top of the frame.



7. Slide the front cross-member into position across the top of the frame as shown. Install the rear cross-member in a similar manner across the frame and push up against the bed rail until center section installation (reference photo in step #6).

DH2101

2003-12 Ram 2500/3500, 2013 Ram 2500 (Includes Mega Cab) 2006-12 Ram 1500/2500/3500 Mega Cab Long & Standard Boxes (No Chassis Cab) Installation Instructions



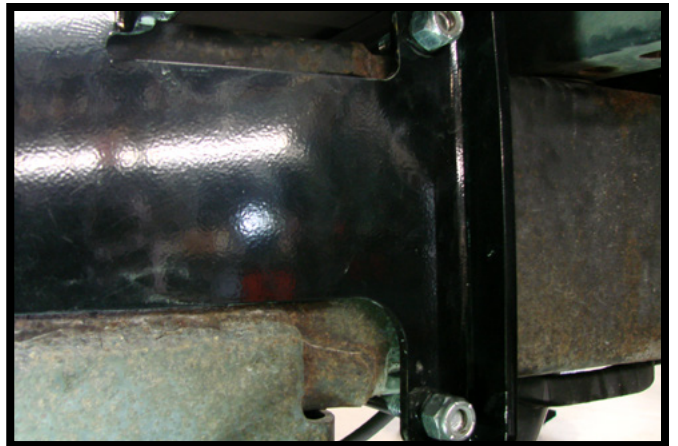
8. Install the center section in between the cross-members and up through the 5" hole in the truck bed. Insert all bolts into the cross-members and center section.



9. Install both side plates and insert corresponding hardware.



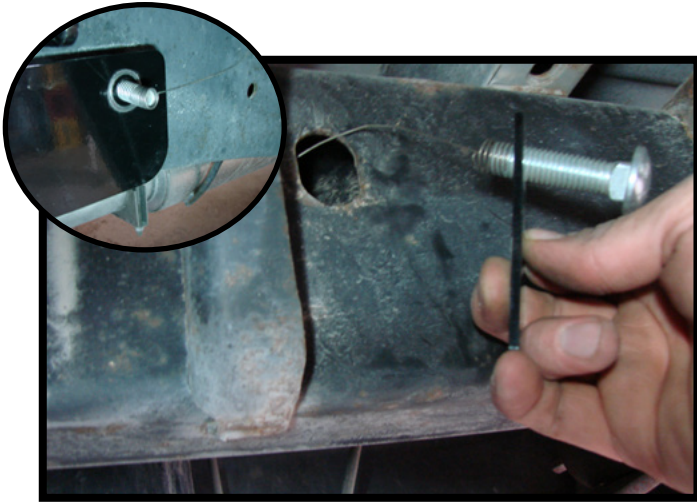
10. Install each u-bolt around the frame and through the holes in both side plates. On the drivers side, pull back the wiring loom and install the u-bolt directly against the frame. Be sure not to pinch any wiring.



11. Secure the u-bolts with lock-nuts.

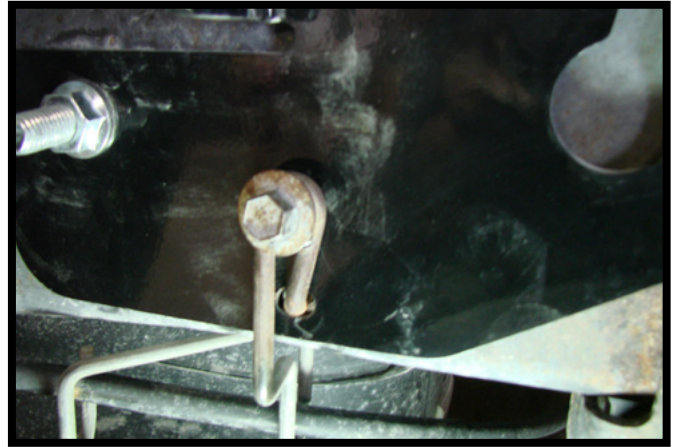
DH2101

2003-12 Ram 2500/3500, 2013 Ram 2500 (Includes Mega Cab) 2006-12 Ram 1500/2500/3500 Mega Cab Long & Standard Boxes (No Chassis Cab) Installation Instructions



12. Insert the fishwire through the side plate and into the vehicle frame. Retrieve the fishwire through the access hole on the inside of the frame and install a plate and carriage bolt. Pull the plate and carriage bolt through the frame and out through the side plate.

Remove the fishwire and install a serrated flange nut onto the bolt.



13. Reinstall emergency brake line bracket using the existing bolt through the two hole in the side plate.

Tighten all hardware starting with the side plates, and finishing with the center section.



14. Using a 19/32" drill bit, drill the two (2) u-bolt holes thru the bed. Do this on both sides of the center section.

Insert the 1/2"-13 u-bolts thru the holes from the topside. Install a 1/2" flat washer, a spring, another 1/2" flat washer and 1/2"-13 lock nut onto each u-bolt stud. Tighten until the washers are touching the spring without compressing it.

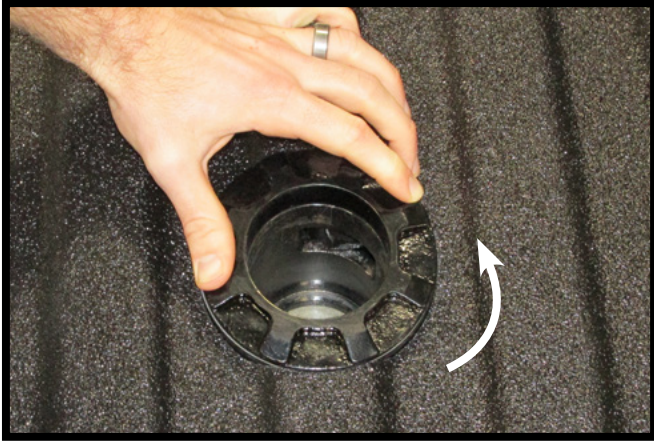
15. Reinstall exhaust.

Note: Use the provided adjustable exhaust hangers if extra clearance between exhaust pipe and hitch is required.

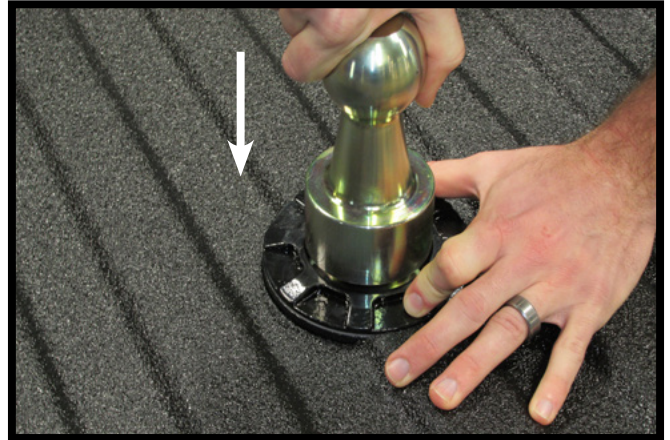
DH2101

2003-12 Ram 2500/3500, 2013 Ram 2500 (Includes Mega Cab)
2006-12 Ram 1500/2500/3500 Mega Cab Long & Standard Boxes (No Chassis Cab)
Installation Instructions

Installing the Hitch Ball



1. Rotate the locking collar to release the latch pawl.



2. Align the ball with the collar and drop the ball into the hitch. Release the locking collar.

Removing the Hitch Ball



1. Rotate the locking collar to release the latch pawl. Pull straight up on the ball to remove from the hitch.

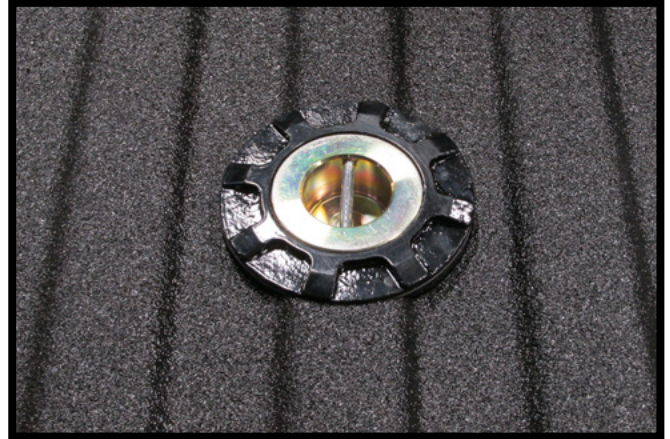
DH2101

2003-12 Ram 2500/3500, 2013 Ram 2500 (Includes Mega Cab)
2006-12 Ram 1500/2500/3500 Mega Cab Long & Standard Boxes (No Chassis Cab)
Installation Instructions

Storing the Hitch Ball



1. Rotate the locking collar to release the latch pawl. Align the ball with the collar and drop the ball into the hitch.



2. Release the locking collar.

CUSTOMER SERVICE COMMITMENT

Blue Ox® is committed to providing you with exceptional customer care throughout your lifetime with our products. Our team is here to assist you with any questions you may have regarding the performance of your product. Simply call (402) 385-3051 and you can speak with our customer care team.

Additionally, please visit our website to see which rallies our Destination America team will be attending. For a nominal fee, our service technician will service your towing system to ensure it's in proper working condition. Also, as a commitment to our customers, should you visit our factory, you can stay at our full service Blue Ox® campground at no charge along with enjoying a factory tour.

Again, thank you for being our customer and for the confidence you have shown in the performance of our products. It is because of customers like you we enjoy the success we have today.

© 2014 Blue Ox
One Mill Road, Industrial Park
Pender, Nebraska 68047
Phone: (402) 385-3051
Fax: (402) 385-3360
www.blueox.com