



BX1657

2002-09 Chevrolet Trailblazer
 2002-09 GMC Envoy
 2002-04 Oldsmobile Bravada
 2003-06 Isuzu Ascender
 2004-07 Buick Rainier
 Installation Instructions

Serial Number

Please read **BOTH** these Installation Instructions and the General Towing Instructions before attempting to install or operate this equipment.

- Blue Ox® towing products and accessories are intended to be installed by Blue Ox® Dealers who are familiar with our products and have the equipment and knowledge to do “fit work”. When necessary Blue Ox® Dealers can be found at www.blueox.com or by contacting our Customer Care Department at (402) 385-3051.
- Many Blue Ox® Baseplates are designed to use existing holes and hardware to mount the baseplate to the towed vehicle. Even though bolts are there, do not assume they are adequate for baseplate mounting. Always use hardware supplied in the hardware kit or existing hardware specified in the Baseplate Towing Installation Instructions.

Attachment Tab Height: 15-1/2”
Attachment Tab Width: 18”

Bolt Torque Specifications		
Torque in Foot-Pounds for Metric Bolts		
Bolt Size	Grade 8.8	Grade 10.9
6MM	6	8
8MM	16	22
10MM	31	40
12MM	54	70
14MM	89	117

Confirm the towability and pre-towing procedures for your vehicle with the owner’s manual or contact the vehicle’s manufacturer for specific towing procedures.

Bolt Torque Specifications		
Torque in Foot-Pounds for Inch Bolts		
Bolt Size	Grade 5	Grade 8
1/4”	10	14
5/16”	19	29
3/8”	33	47
7/16”	54	78
1/2”	78	119
5/8”	154	230



If the front of your vehicle looks different than this, call us at (402) 385-3051.

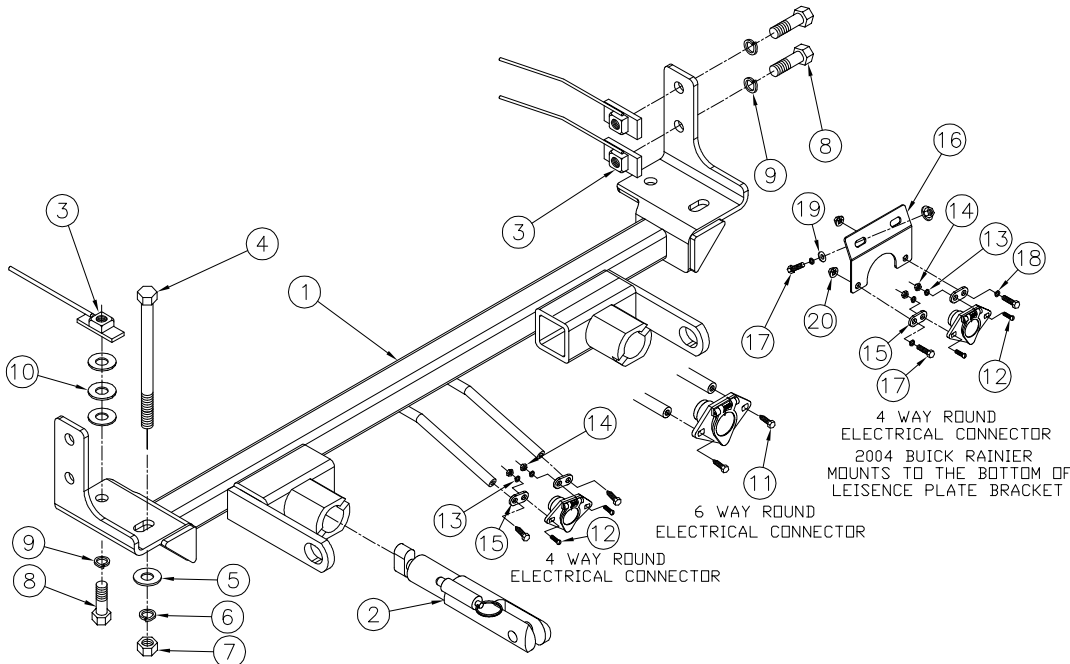
WARNING

Failure to read and follow these instructions could result in separation of the towed vehicle from the tow bar, causing property damage, loss of towed vehicle, personal injury or death.

BX1657
 2002-09 Chevrolet Trailblazer
 2002-09 GMC Envoy
 2002-04 Oldsmobile Bravada
 2003-06 Isuzu Ascender
 2004-07 Buick Rainier
 Installation Instructions

Parts List

Ref. No.	Qty.	Part #	Description
1	1	61-6019	Weldment, Baseplate, BX1657
2	2	62-3468	Attachment Tab Assembly, SF/ SB (R)
3	6	61-3799	Weldment, 1/2"-13, Nutplate, with 10" Wire
4	2	201-0376	5/8"-11 x 8", Hex Bolt, Grd. 5, ZP
5	2	203-0006	5/8" Flat Washer, ZP
6	2	203-0013	5/8" Lock Washer, ZP
7	2	202-0006	5/8"-11, Hex Nut, ZP
8	6	201-0068	1/2"-13 x 1 3/4" Hex Bolt, Grd. 5, ZP
9	6	203-0012	1/2" Lock Washer, ZP
10	6	203-0005	1/2" Flat Washer, ZP
11	2	201-0553	1/4"-20 x 1/2" Hex Wshd. Type F Screw, TS
12	2	201-0192	#10-32 x 1/2" Slot, Rd. Hd. Screw
13	2	203-0054	#10 Lock Washer
14	2	202-0047	#10-32 Hex Nut
15	2	101-5822	Adapter, 4 Way Connector
16	1	101-6645	Electrical Bracket, 20 Degree
17	4	201-0050	1/4"-20 x 3/4" Hex Bolt, Grd. 5, ZP
18	4	203-0001	1/4" Flat Washer, ZP
19	4	203-0008	1/4" Lock Washer, ZP
20	4	202-0069	1/4"-20, Whiz Hex Nut, ZP
	2	226-0046	Baseplate Safety Cable, 36" CL III (Not Shown)
	2	229-0359	Quicklink 3/8", ZP (Not Shown)
	2	290-0437	Receiver, Cap Plug, Blk. (Not Shown)



- ### Tools Required
- 21MM Socket
 - 10MM Socket
 - 15MM Socket
 - 15/16" Socket
 - 15/16" Wrench
 - 13/32" Drill Bit
 - 17/32" Drill Bit
 - Vise Grips
 - Utility Knife
 - Loctite® RED

Important:

Use only genuine factory replacement parts on your baseplate. Do **NOT** substitute homemade or non-typical parts. If a bolt is lost or in need of replacement, for your safety and the preservation of your baseplate, be sure to use a replacement bolt of the same grade (In most cases it will be Grade 5, please reference the parts list above). Replacement parts may be ordered through your nearest Blue Ox® Dealer or Distributor. Failing to follow and/or altering these installation instructions in either installation or required equipment will void the manufacturer's warranty. Towing behind a non-motorized vehicle will void the warranty.

BX1657
2002-09 Chevrolet Trailblazer
2002-09 GMC Envoy
2002-04 Oldsmobile Bravada
2003-06 Isuzu Ascender
2004-07 Buick Rainier
Installation Instructions

Removable Tabs:

Motorhome mounted tow bars are recommended for use with this baseplate. Due to the design of the removable tabs, the RangeFinder II, Adventurer, and Ambassador tow bars can not be used. The Acclaim tow bar may be used, but will not fold and store on the front of the vehicle. Adapters, except for the BX8833 and the BX88151, can not be used with this baseplate.

Installation Notes:

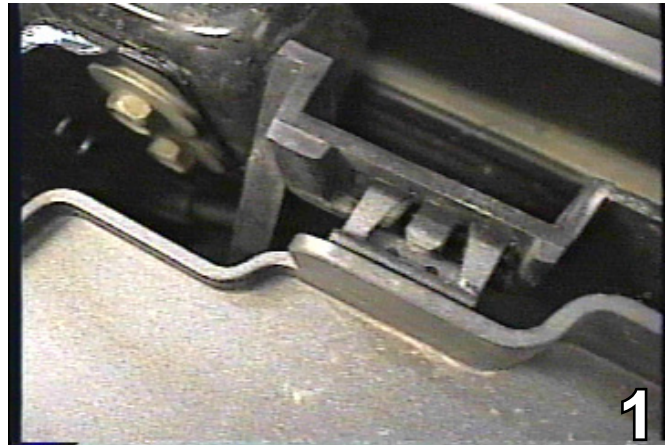
The grille, front fascia, metal bumper and tow hooks are removed for the baseplate installation. **The 2004 Buick Rainier headlight assemblies are also removed for the baseplate installation. The Vehicle must have a metal bumper.** The tow hooks will not be reinstalled. Drilling is required. The air dam and the fascia will be trimmed.

The dimensional variations between otherwise identical vehicles can be considerable. While the baseplate was designed for easy installation, it may be necessary to tailor the baseplate slightly to compensate for auto manufacturer's tolerances. These minor adjustments may include filing a hole slightly, bending electrical rods or bending end plates.

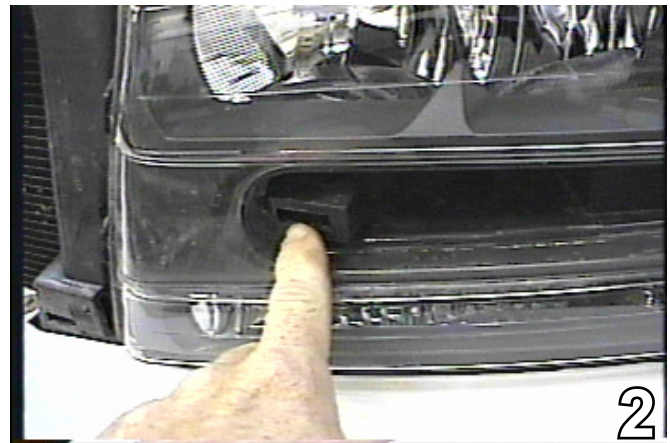
The BX8869 Bulb and Socket Wiring Kit is recommended for this vehicle.

Handling of some cosmetic parts when installing this product may require the use of protective covers, rags, specialty tools, etc. to prevent damage.

Installation Instructions:

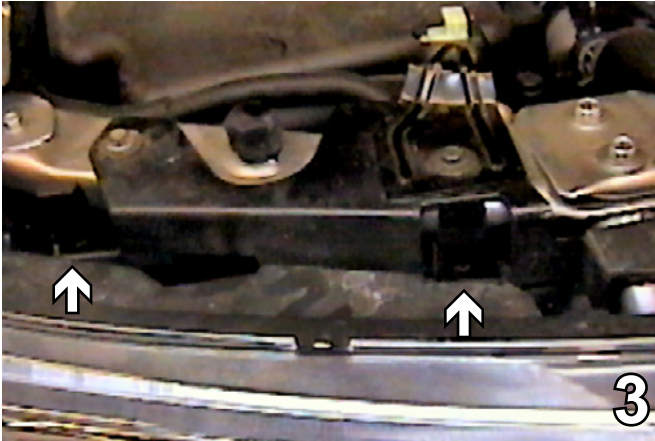


1. Release the four snaps across both the top and bottom of the grille. Pull the grille forward and set aside to be reinstalled later. **(Trailblazer go to Step 2.)**



2. **TRAILBLAZER ONLY:** The grille plastic is also attached in the middle of the headlight assembly. Pull forward to release the clips. Do this on both sides of the vehicle. Set the grille aside to be reinstalled later.

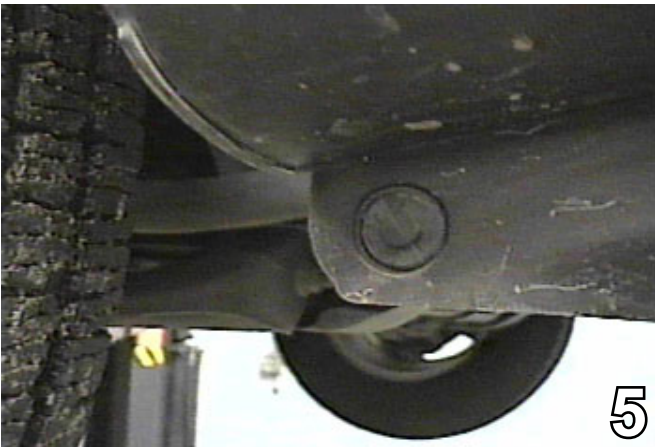
BX1657
2002-09 Chevrolet Trailblazer
2002-09 GMC Envoy
2002-04 Oldsmobile Bravada
2003-06 Isuzu Ascender
2004-07 Buick Rainier
Installation Instructions



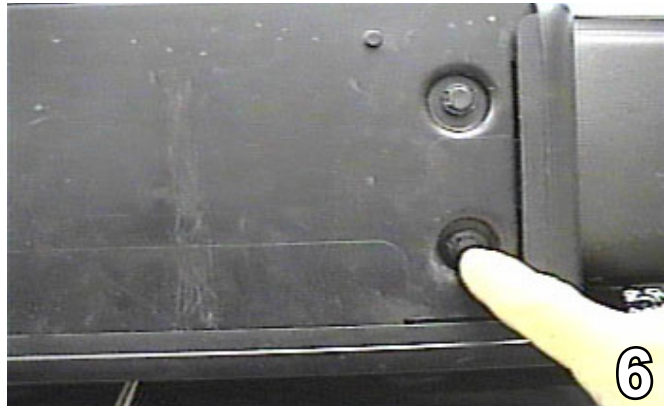
3. **2004 Buick Rainier ONLY:** Lift the two tabs on the top of the headlight assembly to release the tabs. Pull forward, and unplug the electrical connections. Do this to both sides of the vehicle. Set aside to be reinstalled later.



4. Using the 10MM socket, remove two metric bolts and one push pin just under the hood latch, on the top edge of the fascia.



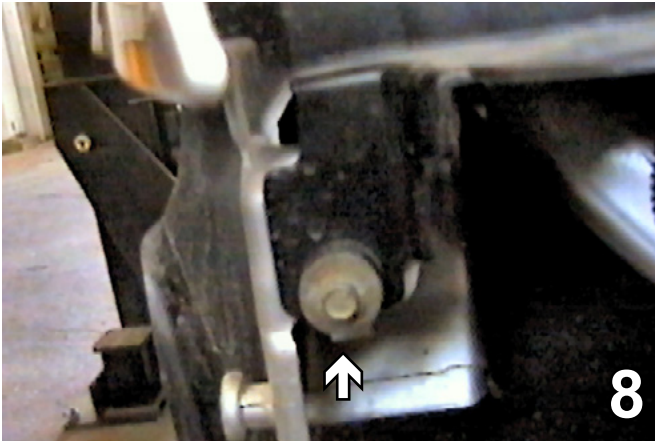
5. Remove one pushpin, just forward of the front tire on the fascia. Do this to both sides of the vehicle.
7. Just under the license plate bracket are four pushpins to be removed. Pull the fascia forward to remove. Set the fascia and the pushpins aside carefully to be reinstalled later.



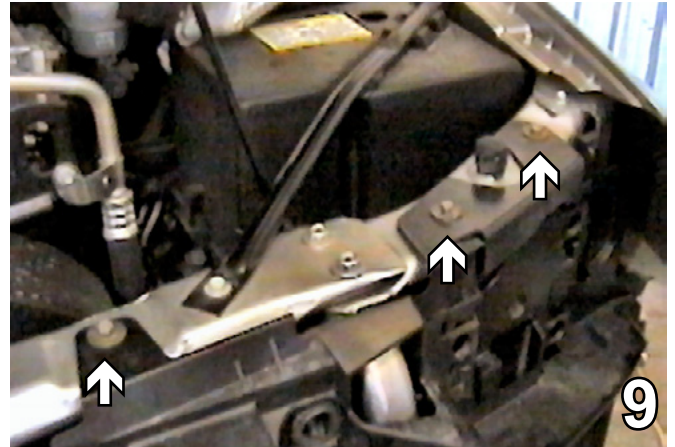
6. If the license plate bracket is available, remove four pushpins. Pull forward and set the bracket and the pushpins aside to be reinstalled later.



BX1657
2002-09 Chevrolet Trailblazer
2002-09 GMC Envoy
2002-04 Oldsmobile Bravada
2003-06 Isuzu Ascender
2004-07 Buick Rainier
Installation Instructions



8. **2004 Buick Rainier ONLY:** Using a 10MM socket, remove one metric bolt just below the headlight assembly. Set the metric bolt aside to be reinstalled later. Do this to both sides of the vehicle.



9. **2004 Buick Rainier ONLY:** Remove three metric bolts from the edge of the black plastic cover using the 10MM socket. Do this to both sides of the vehicle. Set the bolts aside to be reinstalled later.

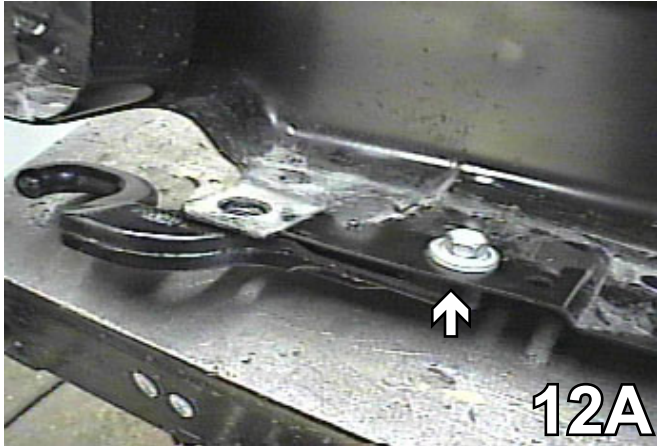


10. **2004 Buick Rainier ONLY:** Pull the black plastic cover forward and unplug the sensor on the back side. Pull forward to remove. Set the cover aside to be reinstalled later.

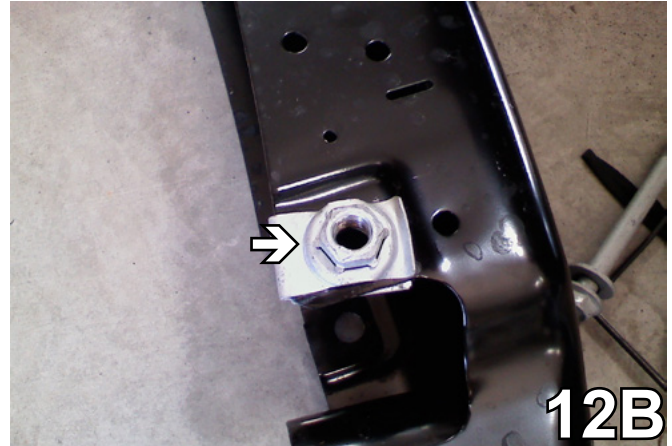


11. Use a 21MM socket and wrench, remove two bolts on the top side of the metal bumper. Pull the metal bumper forward and set on the work bench. Set aside metal bumper to be reinstalled later.

BX1657
2002-09 Chevrolet Trailblazer
2002-09 GMC Envoy
2002-04 Oldsmobile Bravada
2003-06 Isuzu Ascender
2004-07 Buick Rainier
Installation Instructions



12A. **WITH TOW HOOKS:** Using the 15MM socket, remove the factory tow hooks. The factory tow hooks will **NOT** be reinstalled.



12B. **WITHOUT TOW HOOKS:** The nut bracket needs to be removed from the bumper. Some vehicles with tow hooks also have the bracket.



13. Trim the air dam according to the photo above.



14. Reinstall the metal bumper. Install the baseplate using the 5/8-11x8" hex bolts, 5/8 flat washers, 5/8" lock washers, and the 5/8-11 hex nuts. Using the baseplate as a template, drill the two holes using the 17/32" drill bit. Do this on the side of the frame rail and drill one on the bottom. Do this to both sides of the vehicle.

BE SURE TO USE LOCTITE® RED ON ALL BOLTS BEFORE TIGHTENING. TIGHTEN ALL BOLTS ACCORDING TO THE TORQUE CHART ON THE FRONT PAGE OF THESE INSTRUCTIONS OR ON PAGE 3 OF THE BASEPLATE TOWING GENERAL INSTRUCTIONS.

When using power drills be aware of the dangers of torque and drill bit length.

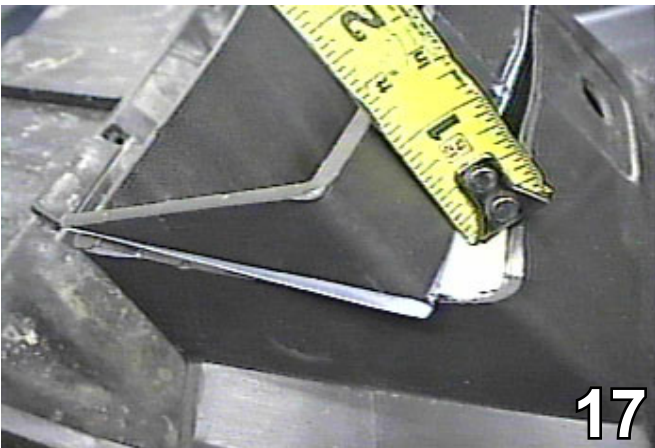
BX1657
2002-09 Chevrolet Trailblazer
2002-09 GMC Envoy
2002-04 Oldsmobile Bravada
2003-06 Isuzu Ascender
2004-07 Buick Rainier
Installation Instructions



15. Remove the metal bumper and baseplate. Clamp the baseplate using the vise grips to align with the drilled holes. Insert the 1/2-13 nut plate into the frame end to align with the drilled holes and install the 1/2-13x 1 3/4" hex bolts, 1/2" lock washers, and the 1/2" flat washers.

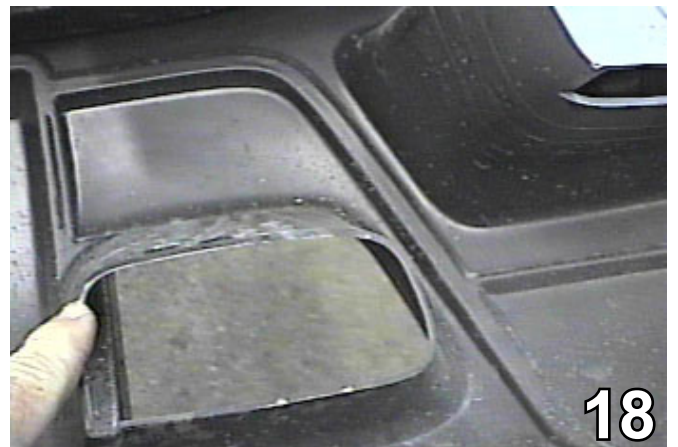


16. Reinstall the metal bumper according to step 10 and tighten all bolts.

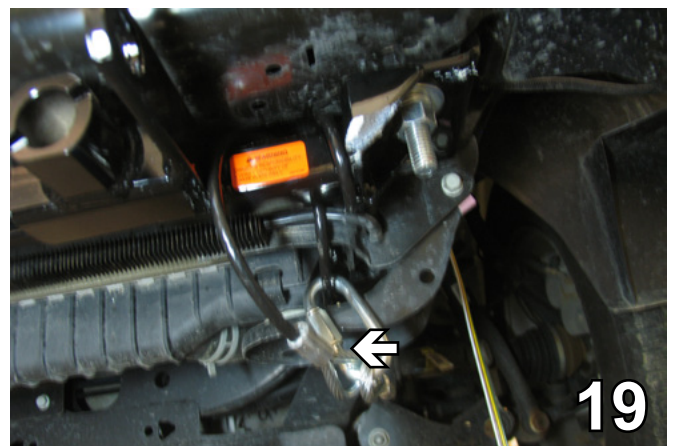


17. **TRAILBLAZER ONLY:** Trim the three middle openings on the back side of the fascia 1 1/4".

19. Attach the permanent baseplate safety cables to the provided convenience link on the baseplate (see grey arrow). The photo above shows the recommended installation of the cables to frame of vehicle (see white arrow). Additional options may interfere with suggested mounting; in this case secure the cables to a solid piece of the frame as described in the instructions included with the permanent baseplate safety cables. Be sure



18. Hold the fascia in place and mark, then trim outer openings as needed.



the safety cables do not rub against any hoses or moving parts. Do this to both sides of the vehicle.

BX1657

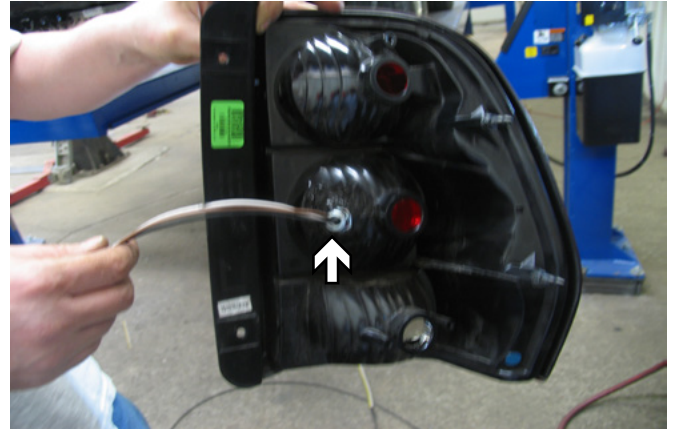
2002-09 Chevrolet Trailblazer
2002-09 GMC Envoy
2002-04 Oldsmobile Bravada
2003-06 Isuzu Ascender
2004-07 Buick Rainier
Installation Instructions

20. Replace the fascia and the grille. Be sure that **ALL** electrical connections are secured and all bolts are tightened.

Install the tow bar and safety cables according to the instructions included in their packages.

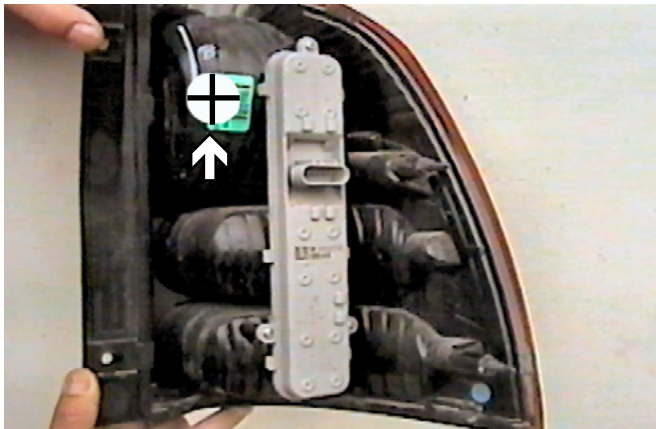
Do NOT substitute other devices if the tow bar pin and clip are lost.

Dealer or Installer: be certain the customer receives the instruction sheet.



Chevy Trailblazer

Possible Location of the BX8869 Bulb and Socket Kits on each Vehicle.



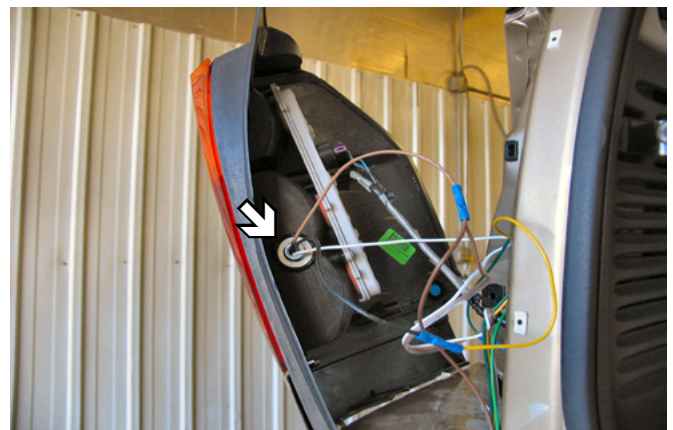
Buick Rainier



Isuzu Ascender



GMC Envoy Denali



GMC Envoy

BX1657

2002-09 Chevrolet Trailblazer
2002-09 GMC Envoy
2002-04 Oldsmobile Bravada
2003-06 Isuzu Ascender
2004-07 Buick Rainier
Installation Instructions

All shown with removable tabs installed.



Buick Rainier



GMC Envoy



Isuzu Ascender



Chevy Trailblazer



GMC Envoy Denali

Customer Service Commitment

Blue Ox is committed to providing you with exceptional customer care throughout your lifetime with our products. Our team is here to assist you with any questions you may have regarding the performance of your product. Simply call (402) 385-3051 and you can speak with our customer care team.

Additionally, please visit our website to see which rallies our Destination America team will be attending. For a nominal fee, our service technician will service your towing system to ensure it's in proper working condition. Also as a commitment to our customers, should you visit our factory you can stay at our full service Blue Ox campground at no charge along with enjoying a factory tour.

Again thank you for being our customer and for the confidence you have shown in the performance of our products. It is because of customers like you we enjoy the success we have today

© 2004, 06, 07, 08, 09, 10 Blue Ox
One Mill Road, Industrial Park
Pender, Nebraska 68047
Phone: (402) 385-3051
Toll Free: (800) 228-9289
Fax: (402) 385-3360
www.blueox.com
12/5/11